

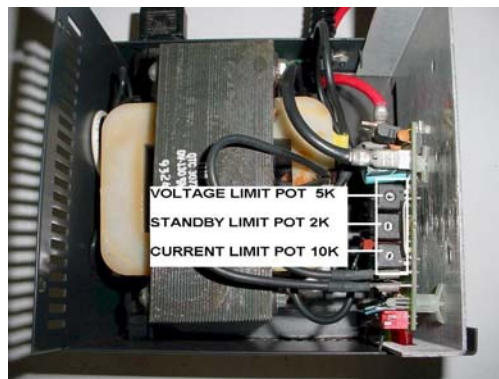
TurboStart 16 Volt Wet Battery Charger Modification

This will convert the Interacter 8 and 15 amp chargers for use with TurboStart AGM Series non-spillable 16 Volt Racing Batteries.



Instructions should be read entirely before starting the modification. If the adjustments are not performed properly permanent damage to the charger may result. During this procedure care must be taken to ensure that any of the electrical components are not touched with either your hand or any tools. This may result in damage to the charger or electrical shock to yourself. If you are not comfortable re-calibrating the charger you can return it to New Castle and we will be happy to perform the voltage adjustments for you free of charge. Contact the Tech Department at 877-324-9300.

- 1. Disconnect the charger and unplug from the wall outlet.**
- 2. Remove 2 screws from each side of the charger.**
- 3. Lift the cover off of the charger.**
- 4. Locate the potentiometers for adjusting the voltage limit and standby voltage. They are shown below.**



5. Ensure that all pots are properly identified. Each pot has a specific function during charging. The correct pot must be adjusted for each step of the calibration or the charger will not function properly. The pots are marked with 5k, 2k, and 10k.



6. Adjust the standby (2K) potentiometer fully counter-clockwise. See the diagram above.

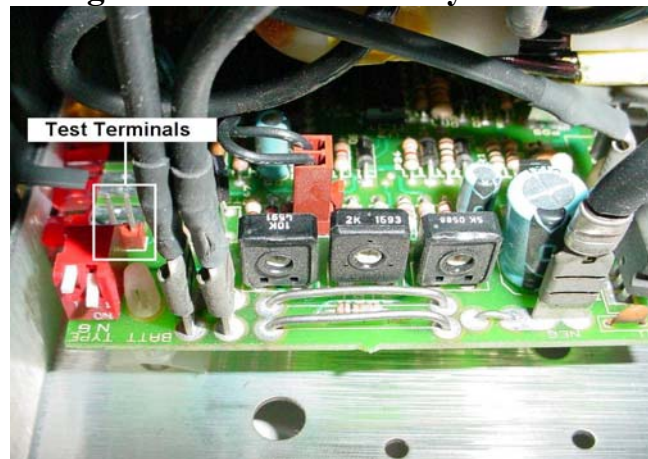
7. Connect the charger to a fully charged 16 volt Battery.

8. Plug the charger into a 110 volt outlet and turn the charger on.

9. Connect a voltmeter set to read dc voltage to the battery charger leads on the battery.

10. Turn the voltage limit (5K) pot *very slowly* in the counter-clockwise direction until the voltage reads 19.00 +/- .05 volts.

11. Using a small screwdriver short the test terminals shown below together. This will cause the charger to enter the standby mode.



12. The voltage reading will begin to drop. Allow the voltage to fall to 17.60 volts or less. This may take up to an hour. Once the voltage falls below 17.60 very slowly turn the standby (2K) pot clockwise until the voltage reads 17.60 +/- .05 volts.

Note: Do not adjust the current control (10K) potentiometer. The current limit pot looks the same as the voltage limit and standby pots but is located on the opposite side of the interior circuit board. The current limit does not need to be changed because it is the same regardless if the battery is AGM or flooded. All measurements are taken with the multi-meter connected to the battery charger and battery terminals.